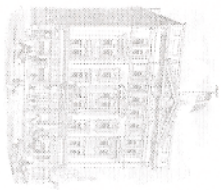


Welcome

To a unique environment of opulence. Share in the excitement and mystique of a Grand Celebration in Your honor and for Your pleasure.



A Music Hall, Entertainment and Conference Center ... Since 1892

A National Historical Landmark

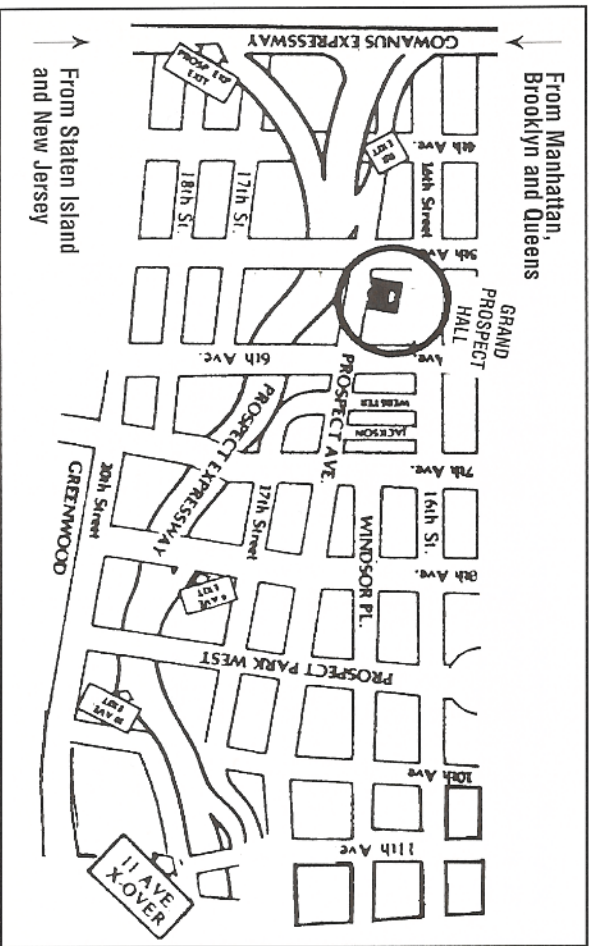
THE GRAND Prospect Hall

263 Prospect Avenue • Brooklyn, New York 11215

(between 5th & 6th Avenues)
(718) 788-0777 • Fax: (718) 788-0404

www.grandprospecthall.com
www.oakroomrestaurant.com

"WE ARE IN THE HEART OF NEW YORK"



From Manhattan,
Brooklyn and Queens

From Staten Island
and New Jersey

* DETAILED DIRECTIONS ON THE REVERSE SIDE.

* VALET PARKING ON PREMISES

* "STROLLERS ARE NOT PERMITTED IN THE FACILITIES UNLESS CHECKED WITH COAT ROOM"

263 Prospect Avenue • Brooklyn, New York, 11215
(between 5th & 6th Avenues)
(718) 788-0777 • Fax: (718) 788-0404
www.grandprospecthall.com • www.oakroomrestaurant.com

MANHATTAN: Brooklyn Bridge or Battery Tunnel to Brooklyn Queens Expressway (WEST), bear left onto Prospect Expressway; Exit at 10th Avenue; proceed to 11th Avenue; turn left; 2nd traffic light turn left onto Prospect Avenue; and continue to 263 Prospect Avenue.

QUEENS / NORTHERN LONG ISLAND: Brooklyn Queens Expressway (WEST), bear left onto Prospect Expressway; Exit at 10th Avenue; proceed to 11th Avenue; turn left; 2nd traffic light turn left onto Prospect Avenue; and continue to 263 Prospect Avenue.

SOUTHERN LONG ISLAND: Belt Parkway to Exit 7 B, make a right onto Ocean Parkway North; continue to Prospect Expressway; Exit at 8th Avenue (Exit 3); make a Right; and at the 1st traffic light make a left onto Prospect Avenue; and continue to 263 Prospect Avenue.

STATEN ISLAND: 278 (EAST), Exit onto Prospect Expressway; Exit at 10th Avenue; proceed to 11th Avenue; turn left; 2nd traffic light turn left onto Prospect Avenue; and continue to 263 Prospect Avenue.

NEW JERSEY: Follow directions from Staten Island or Manhattan.

BY TRAIN: R Local to Prospect Avenue Station; Walk one block to 5th Avenue.

LIRR: To Flatbush Avenue Terminal Take R Local to Prospect Avenue Station, 1 1/2 blocks away.

FROM BROOKLYN

DOWNTOWN: Take Atlantic Avenue to 4th Avenue; turn right and proceed to 16th Street; turn left; and continue to 6th Avenue; turn right and continue one block to Prospect Avenue; turn right and continue to 263 Prospect Avenue

EASTERN PARKWAY: Reach Grand Army Plaza. 1/2 way around the circle; turn right onto Union Street; and continue to 6th Avenue; where you turn left; continue to Prospect Avenue; (one block after 16th Street) make a right turn and proceed to 263 Prospect Avenue.

OCEAN PARKWAY: Ocean Parkway North; continue to Prospect Expressway; Exit at 8th Avenue (Exit 3); make a right; and at the 1st traffic light make a left onto Prospect Avenue; and continue to 263 Prospect Avenue. (Approx. 2 1/2 Blocks).

BAY RIDGE: 4th Avenue to 17th Street; make a right and continue to 6th Avenue; make a left and continue to Prospect Avenue and make a left onto Prospect Avenue and continue to 263 Prospect Avenue.

BENSONHURST: Follow directions from Ocean Parkway or Bayridge.

BY BUS:

- B63: 5th Avenue to Prospect Avenue. May transfer with B35, B70, B9, B75.
- B67: 7th Avenue to Prospect Avenue. May transfer B69, B71, B41.
- B37: Third Avenue stops at Prospect Avenue.